

Transform GenBank annotations into graphical maps.

Choose from hundreds of fonts, colors, styles and fill patterns for enzymes and features to draw circular or linear vector maps with a click of a button.

Choose more than one font in a single textual word when displaying enzymes or annotations.

Display MCS's by listing the enzymes that cut only within the MCS in the bracket view.

Draw vector maps with or without knowing the vector sequence.

Use the powerful notes facility for storing and printing reference material.

Define your own custom color theme and apply it repeatedly.

Generate images in vector graphic format for Adobe Illustrator 10 and MS PowerPoint 2003.

Export high resolution images in JPEG, PNG and TIFF format for easy addition to web sites or export images as ready-to-host pages.

Simulate cloning experiments to save time and laboratory resources.

Quickly and easily place inserts in vectors by simple cut and paste commands.

Search for ORFs in all possible reading frames.

Translate sequences for simulating expressed proteins to check possible reading frame errors.

Add text to annotate the map.

Print the vector map, the sequence, the detailed analysis results and your notes.

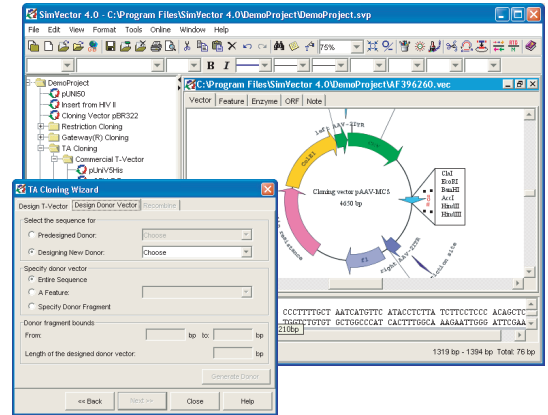
Use over a 1000 restriction enzymes or 24 commercial enzyme sets provided, or create your own set for repeated analysis.

Select restriction enzymes by overhang, recognition site length and other properties.

## Exceptional Publication Quality Plasmid Maps

Whether you are a catalog company selling engineered plasmids or conducting restriction or recombinant cloning experiments, SimVector will help you simulate the experiments and create publication quality maps from start to finish. Use it to draw circular and linear vector maps in a variety of colors, patterns, fonts and line types. Display enzyme names in two font styles with the bacterium portion in Italics as is traditional. Use even more than one font style and color in

a single textual word anywhere in the map including in the feature annotations. Export plasmid maps in EPS format for Adobe Illustrator 10, SVG for Microsoft Power Point 2002 or as ready-to-host web pages. Choose JPEG, TIFF and PNG formats for export.



## Multiple Cloning Site (MCS) Display is Unique to SimVector

Vector catalogs generally display MCS's in a unique format, with enzymes one above the other in a vertical list. SimVector identifies the MCS's by interpreting GenBank header annotations or you can specify them manually. It then draws them in this special format we call the "Bracket View". It even has the smarts to list only the enzymes that cut within the MCS and nowhere else.

## Lightning Fast Cloning Simulation

SimVector transforms annotations in sequence headers from GenBank or local files into fully illustrated maps. The cloning wizard steps you through popular recombinant protocols such as Gateway® and TA, as well as single or two enzyme restriction cloning. ORF search helps you ensure that the construct remains in-frame. With a click of a button, you can translate sequences of expressed proteins to check for possible reading frame errors. With SimVector, cloning simulation is as simple as clicking a few buttons.

## Restriction Enzyme Analysis

SimVector has a comprehensive restriction enzyme analysis facility. Choose from a database of more than a thousand restriction enzymes or use a popular commercial enzyme set we have preloaded. You can even design your own custom enzyme sets.

## Biologist-designed Intuitive Interface

SimVector has an intuitive biologist-designed interface for cloning simulation and sequence analysis. Point-and-click wizards make it easy to use even for beginners, while versatile functionality offers full control for experts.

### To activate & evaluate, follow these steps

- Install SimVector from the website or the CD
- Launch and click **Evaluate** on the first window that opens
- Enter the evaluation key requested from us

### For a quick start

- Check the Multimedia Tutorial

### Order on-line

- E-mail: [sales@premierbiosoft.com](mailto:sales@premierbiosoft.com)
- Phone: 650-856-2703, Fax: 650-618-1773

# Bioinformatics Services

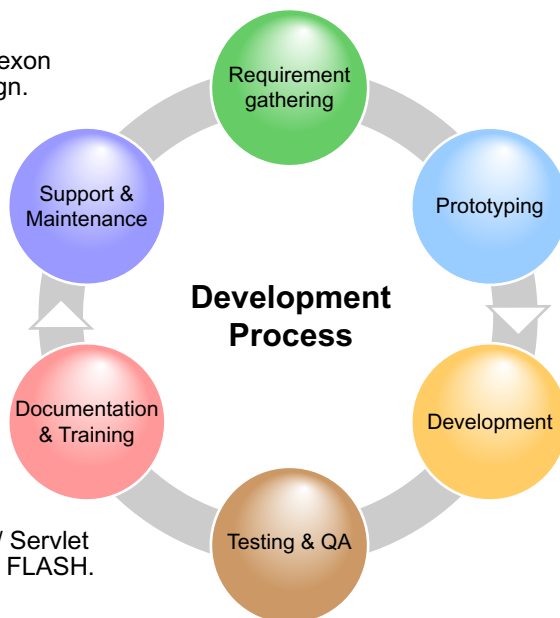
PREMIER Biosoft has a successful record of software development in bioinformatics molecular biology since 1994. Our software products have been well received by the life science community over these years. We specialize in software development, design, testing and maintenance. If you have a new requirement or need the upkeep of a current database/software system, our team of bioinformatics scientists and computer professionals can assist. We have implemented projects and have expertise in the following:

- **Real time PCR** - Including our proprietary algorithms for multiplexing, exon junction primer design, cross species and species specific primer design.
- **Statistics** - All common statistical techniques used in bioinformatics applications including Cox Regression, Principal Component Analysis, Hierarchical Clustering & Log Rank.
- **Glycomics** - Mass spectroscopy glycan structure prediction.
- **DNA microarrays** - High throughput probe design and microarray data analysis.
- **Tissue microarrays** - Statistical analysis of high throughput tissue microarray data.

We are available for your research and commercial bioinformatics needs. Get the project done right, on time, and within budget for:

- Website application design, development and maintenance using JSP/ Servlet architecture, PHP, ASP, XHTML, JavaScript, Perl/CGI/ technologies, & FLASH.
- Database solutions built using Oracle, MySQL and PostgreSQL.
- Cross platform and multi-OS supported applications including Windows, UNIX/Linux and Macintosh platforms.

For more information, please write to us at [info@premierbiosoft.com](mailto:info@premierbiosoft.com) or call 650-856-2703 or visit the "Services" section of our website.



## AlleleID®

A comprehensive tool designed to address the challenges of species identification & taxa discrimination using qPCR, xMAP® and microarrays. (for Win & Mac)

## Array Designer

For fast and efficient design of specific oligos for whole genome arrays, tiling arrays and resequencing arrays. (for Win & Linux)

## Beacon Designer™

Design specific and efficient oligos for all major qPCR assays. (for Win & Mac)

## CellSee

A comprehensive image analysis tool for cell-based high content screening. (for Win)

## LAMP Designer

Design Primers for Loop Mediated Isothermal Amplification. (for Win)

## PrimerPlex

A unique design tool for xMAP® based multiplex systems. (for Win & Mac)

## Primer Premier

A comprehensive primer design tool for standard PCR assays. (for Win and Mac)

## SimGlycan®

An innovative MS<sup>n</sup> data analysis tool. (for Win)

## SimLipid

An innovative Lipid characterization tool. (for Win)

## TMA Foresight

A statistical tool for tissue microarray data analysis. (for Win)

## Xpression Primer

A novel tagged primer design tool for expression cloning and for designing sequencing primers to verify transcripts. (for Win & Mac)